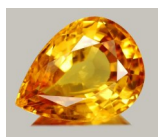


# Hartsbourne Herald



# Topaz



Hartsbourne Primary School  
Hartsbourne Road  
Bushey Heath WD23 1SJ

Edition 10 Autumn Term,  
16th November 2018

**LEARNING GEMS (This week):** *Topaz* Brave enough to have-a-go, willing to take a chance on being wrong, kind and supportive if others are wrong.

Rec: Etienne is always kind and Hudson is always willing to 'have-a-go.'

Year 1: Dakota is brave and always 'has-a-go' at something, Mason supports his peers.

Year 2: Ijahn and Dimitri are always supportive friends.

Year 3: Marshall will always 'have-a-go' and Enrique will try to use new skills.

Year 4: Khushi is kind and supportive when others might be wrong, Aarnav will 'have-a-go.'

Year 5: Ayyan has been brave enough to take a chance and Owen took on a challenge.

Year 6: Sofia is always willing to 'have-a-go' and Jessica is a kind and supportive learning partner.

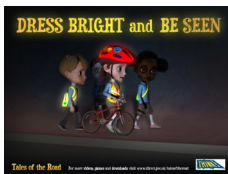
## ENRICHMENT, TRIPS, ASSEMBLIES

The children have participated in a number of extra activities this week, relating to the theme of Respect as part of the national programme for anti bullying week. A recent National survey also found that children want adults to show more respect for each other, as worrying numbers of children witness adults setting a bad example by bullying and disrespecting each other.

The results of a poll, published by the Anti-Bullying Alliance ahead of Anti-Bullying Week 2018, suggest that over four-in-ten children (41%) have seen adults bullying each other during the last six months, with an even greater number (60%) witnessing grown-ups being disrespectful to other adults.

It is very rare in schools to see adults (parents and staff) disrespecting one another but it does happen occasionally, especially related to driving and parking outside the school. We have zero tolerance for abuse towards staff and will always follow the advice of the police in such cases.

At Hartsbourne, all staff and parents can be relied on to act as appropriate role models for children and we have their best interests at heart on every occasion. There is **no replacement for talking** (to the right person) about a concern or worry you might have with regards to your child's education and you can always make an appointment to see your class teacher, the Senco or the Head Teacher. Airing your gripe on social media merely spreads the problem around with no chance of a resolution!



**HEALTH & SAFETY:** A reminder from the road safety team about wearing bright colours and hi vis clothing at night when walking or cycling in dark areas. Please also note: ankle bracelets pose a health and safety concern and are **NOT** part of our uniform. Please remove any ankle bracelets from your child. Long hair must be tied back from the face and no jewellery or nail varnish please.

**FINALLY: Congratulations** to Erin (Y3) for winning the Caterlink Design a Menu competition, and Samuel (Reception) and Louisa (Y4) for being great runners-up.

*Best wishes from Valerie Hudson (Head Teacher) and all the staff at Hartsbourne.*

# Diary Dates

# Friends of Hartsbourne

* = Parents Invited	
Christmas Bazaar Wednesday	5.12.18
<b>Occasional Day, School Closed</b>	<b>7.12.18</b>
KS1 show* (pm)	12.12.18
KS1 show* (am)	13.12.18
KS2 Show* (pm)	17.12.18
KS2 show* (6.00pm)	18.12.18
Christmas Dinner Day Wednesday	19.12.18
<b>SCHOOL CLOSSES 2.00PM</b>	<b>21.12.18</b>
INSET - Staff Only	7.1.19
School Opens	8.1.19
Primary School Applications <b>close</b>	15.1.19
School Disco	24.1.19
Bright Colours Day (mufti day)	25.1.19
Valentine's Day Cake Sale	8.2.19
<b>HALF TERM 18.2.19—22.2.19</b>	
Return to school Monday	25.2.19
Parent Teacher Evening TBC	March
Parent Teacher Evening TBC	March
Y6 to PGL	1.5.19
Easter Bonnet Day	5.4.19
<b>END OF TERM 2.00PM</b>	<b>5.4.19</b>
School places offered	16.4.19
School re-opens Tuesday	23.4.19

EVENT	WHERE	WHEN
Christmas Bazaar	Hall 3.30—4.45pm	Wednesday 5.12.18
School Disco	Hall	Thursday 24.1.19
Bright Colours Day Bring a £1.00	All Classes	Friday 25.1.19
Valentine's Day Cake Sale	Hall	Friday 8.2.19
Easter Bonnet Day	All Classes	Friday 5.4.19
Movie Night (Y2—Y6)	Classrooms	Wednesday 22.5.19
Bring a Bottle	Classrooms	Friday 14.6.19
School Fair	Playground	Saturday 15.6.19
Parents' Football Match (!)	Field	Sunday 14.7.19
Crazy Hair Day	School	Monday 22.7.19

**Sika** 398

**Roe** 540

**Muntjac** 438

**Fallow** 385

**HOMEWORK—ON TEACHER'S BLOG:**  
Please read your teacher's class blog for homework as we are no longer able to use 'Show My Homework' due to cost.

Please notify all sickness absence via phone or e mail before 8.55am on each and every day of absence. (There are NO exceptions)!

[www.hartsbourne.org.uk](http://www.hartsbourne.org.uk). E-mail: [parents@hartsbourne.org.uk](mailto:parents@hartsbourne.org.uk). Telephone: 0208 950 6853  
PAPER COPIES OF NEWSLETTERS ARE AVAILABLE BY REQUEST TO THE OFFICE.

## HARTSBOURNE PRIMARY SCHOOL

### LEARNING TO LEARN GEMS



#### *Pearl*

Can maintain good focus, stay on-task, ignore distractions, good listening skills for peers and adults.

#### *Topaz*

**Brave enough to have-a-go, willing to take a chance on being wrong, kind and supportive if others are wrong.**

#### *Amethyst*

**Comfortable with mistakes; can learn from them and bounce back. Can keep calm even when upset.**

#### *Ruby*

**Can support others with friendliness, smiling and good listening, give praise appropriately and help others with a problem.**

#### *Sapphire*

**Can collaborate with others in group work, take turns, share ideas. Listen to the ideas of others and accepts challenges/changes.**

#### *Emerald*

**Co-operate with different partners on a 1:1 basis and show good listening and talking skills. Take turns and co-operate to develop learning and ideas.**

#### *Diamond*

Being independent and responsible by solving own problems, using different learning strategies and building on previous knowledge. Can identify next steps in learning.

**PLEASE TELEPHONE THE OFFICE BY LUNCHTIME IF YOUR CHILD IS BEING COLLECTED BY SOMEONE ELSE AS A 'LAST MINUTE' ARRANGEMENT. We cannot guarantee getting messages to teachers and children after 1.00pm.**

Please make sure your child is collected promptly at **3.20pm from their classroom door**. We do not have any after-school childcare facilities so unless your child is attending a club they must be collected by the time stated.

If you have a genuine emergency (eg flat tyre) please telephone the school office to let them know. Heavy traffic is NOT an emergency as we must all plan our journeys for increased traffic mid-afternoon. If you cannot get to school for 3.20pm because of work commitments then please arrange alternative childcare. Relying on ad-hoc arrangements can be very unsettling for children.

#### **ACCESS TO THE SCHOOL**

Please do NOT use the gates marked NO ENTRY that lead to the car park or climb around the gates on the flower beds near the new Portacabin. This is to ensure children are safe from cars leaving the car park. They could easily trip on the raised beds and hurt themselves.

Please use the pedestrian gates to access the school rather than follow a car through the vehicle gates. This is a dangerous example for children to follow and breaking the beam of the sensors can cause the gates to 'freeze'.