



Sapphire



Hartsbourne Primary
School
Hartsbourne Road

Edition 13 Autumn Term,
5th December 2018

Sapphire

Can collaborate with others in group work, take turns, share ideas.

Listens to the ideas of others and accepts challenges/changes.

Rec: Belle is keen to share her ideas and listens to others. Shiri is good at sharing and taking turns

Y1: Rafi J takes his time to share and Jasper is always eager to accept a challenge.

Y2: Dillon and Betty for great teamwork and sharing during our extraordinary snack challenge.

Y3: John always accepts ideas to improve his work and Yanni is always able to help a group focus.

Y4: On a school trip.

Y5: Kian is taking on more challenges and Libby listens to others especially during the show.

Y6: Ella and Leo are excellent team players and always listen to other people's ideas.

REMINDERS: School is **CLOSED** on Friday 7th December for our Occasional Day.
SCHOOL CLOSSES AT 2.00PM ON THE LAST DAY OF TERM. PLEASE BE PROMPT TO COLLECT YOUR CHILD FROM THE CLASSROOM DOOR AS USUAL.

ENRICHMENT, LEARNING, TRIPS, ASSEMBLIES

Many thanks to the Friends of Hartsbourne for making the Christmas Bazaar so successful. A wonderful time was had by all. Many thanks to parents for all the wonderful cakes and biscuits, donated toys and chocolate for the chocolate tombola! Lovely!

Year 4 had an amazing time at the Mill Green museum this week. Thank you very much to our staff and parent volunteers who helped to make it successful. It has been full steam ahead for show rehearsals this week and we look forward to seeing parents on show days.

CHRISTMAS SHOWS

In order to comply with fire regulations we must keep to the capacity of the hall therefore, please do NOT bring ANY younger siblings or family members without a ticket. Babies or toddlers will not be admitted to the KS2 evening show.

The shows are not suitable for toddlers and babies as they get restless and disturb or distract the children on the stage and we want you to be able to hear them clearly. If you cannot avoid bringing a baby or toddler to the KS1 show then please be aware that if they are too restless you will be asked to take them out.

Please don't let young children climb on the stage or approach the children before the show begins. Thank you for your cooperation with this, our sole aim is to provide our parents and pupils with a wonderful experience and that you see them at their best.

Best wishes from Valerie Hudson (Head Teacher) and all the staff at Hartsbourne.

Diary Dates

Friends of Hartsbourne

* = Parents Invited	
KS1 show* (pm)	12.12.18
KS1 show* (am)	13.12.18
KS2 Show* (pm)	17.12.18
KS2 show* (6.00pm)	18.12.18
Christmas Dinner Day Wednesday	19.12.18
SCHOOL CLOSSES 2.00PM	21.12.18
INSET - Staff Only	7.1.19
School Opens	8.1.19
Primary School Applications close	15.1.19
School Disco	24.1.19
Bright Colours Day (mufti day)	25.1.19
Valentine's Day Cake Sale	8.2.19
HALF TERM 18.2.19—22.2.19	
Return to school Monday	25.2.19
Parent Teacher Evening TBC	March
Parent Teacher Evening TBC	March
Y6 to PGL	1.4.19
Easter Bonnet Day	5.4.19
END OF TERM 2.00PM	5.4.19
School places offered	16.4.19
School re-opens Tuesday	23.4.19

EVENT	WHERE	WHEN
School Disco	Hall	Thursday 24.1.19
Bright Colours Day Bring a £1.00	All Classes	Friday 25.1.19
Valentine's Day Cake Sale	Hall	Friday 8.2.19
Easter Bonnet Day	All Classes	Friday 5.4.19
Movie Night (Y2—Y6)	Classrooms	Wednesday 22.5.19
Bring a Bottle	Classrooms	Friday 14.6.19
School Fair	Playground	Saturday 15.6.19
Parents' Football Match (!)	Field	Sunday 14.7.19
Crazy Hair Day	School	Monday 22.7.19

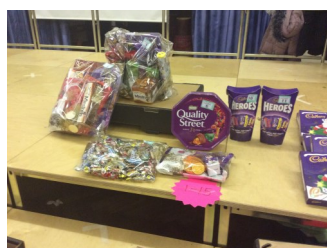


Sika 345

Roe 395

Muntjac 392

Fallow 439



Christmas Bazaar 2018



HOMEWORK—ON TEACHER'S BLOG:
Please read your teacher's class blog for homework as we are no longer able to use 'Show My Homework' due to cost.

Please notify all sickness absence via phone or e mail before 8.55am on each and every day of absence. (There are NO exceptions)!

www.hartsbourne.org.uk. E-mail: parents@hartsbourne.org.uk. Telephone: 0208 950 6853
PAPER COPIES OF NEWSLETTERS ARE AVAILABLE BY REQUEST TO THE OFFICE.

HARTSBOURNE PRIMARY SCHOOL

LEARNING TO LEARN GEMS



Pearl

Can maintain good focus, stay on-task, ignore distractions, good listening skills for peers and adults.

Topaz

Brave enough to have-a-go, willing to take a chance on being wrong, kind and supportive if others are wrong.

Amethyst

Comfortable with mistakes; can learn from them and bounce back. Can keep calm even when upset.

Ruby

Can support others with friendliness, smiling and good listening, give praise appropriately and help others with a problem.

Sapphire

Can collaborate with others in group work, take turns, share ideas.

Listen to the ideas of others and accepts challenges/changes.

Emerald

Co-operate with different partners on a 1:1 basis and show good listening and talking skills. Take turns and co-operate to develop learning and ideas.

Diamond

Being independent and responsible by solving own problems, using different learning strategies and building on previous knowledge. Can identify next steps in learning.

PLEASE TELEPHONE THE OFFICE BY LUNCHTIME IF YOUR CHILD IS BEING COLLECTED BY SOMEONE ELSE AS A 'LAST MINUTE' ARRANGEMENT. We cannot guarantee getting messages to teachers and children after 1.00pm.

Please make sure your child is collected promptly at **3.20pm from their classroom door**. We do not have any after-school childcare facilities so unless your child is attending a club they must be collected by the time stated.

If you have a genuine emergency (eg flat tyre) please telephone the school office to let them know. Heavy traffic is NOT an emergency as we must all plan our journeys for increased traffic mid-afternoon. If you cannot get to school for 3.20pm because of work commitments then please arrange alternative childcare. Relying on ad-hoc arrangements can be very unsettling for children.

ACCESS TO THE SCHOOL

Please do NOT use the gates marked NO ENTRY that lead to the car park or climb around the gates on the flower beds near the new Portacabin. This is to ensure children are safe from cars leaving the car park. They could easily trip on the raised beds and hurt themselves.

Please use the pedestrian gates to access the school rather than follow a car through the vehicle gates. This is a dangerous example for children to follow and breaking the beam of the sensors can cause the gates to 'freeze'.