

Hartsbourne Herald



Hartsbourne Primary School
Hartsbourne Road
Bushey Heath WD23 1SJ

Edition 16 Spring Term
8th January 2021

A very warm welcome back to the world of Hartsbourne, although it is not quite the start we wanted to 2021 there are some positives so please look at the lovely work sent in by children on the next few pages.

ACHIEVEMENT BOOK: Pearl Can maintain good focus, stay on-task, ignores distractions, good listening skills for peers and adults.

Year 1 Levi worked hard to stay focused and independent and Teddy has put it on lots of effort on lots of tasks!

Year 2 Rafi has put a lot of care and consideration into poetry and Sienna has maintained a high standard of presentation.

Year 3 Jasper and Taylor have uploaded high level work and they should be proud of their achievements.

Year 4 Dimitri has stayed focused even with challenges and Rahavi has applied focus and listening skills in writing.

Year 5 Ryley has worked extra hard on maths and achieved well and Zoe has put in a lot of imaginative effort to story writing.

Year 6: Charlotte W, Henry and Robbie have focused well and worked as a team, demonstrating excellent listening skills.

December 2020 SAM Learning:

| | |
|---|--------|
| 1 | Year 3 |
| 2 | Year 5 |
| 3 | Year 6 |
| 4 | Year 4 |
| 5 | Year 2 |

Congratulations to our top year groups and top 10 pupils, keep up the good work!

| | |
|----|-------------|
| 1 | Adria |
| 2 | Zaynah |
| 3 | Sathees |
| 4 | Charlotte S |
| 5 | John |
| 6 | Ruben |
| 7 | Xavi |
| 8 | Jack L |
| 9 | Jacob R |
| 10 | Noah C |

FURTHER INFORMATION ABOUT REMOTE LEARNING ON PAGE 2.

HEALTH & SAFETY

Our risk assessment has been updated for the start of the term (on the website), however, guidance has been changing rapidly since Monday and it is already out of date. Hertfordshire will be issuing a new one as soon as possible.

SCHOOL ATTENDANCE

Early years and childcare settings are now able to open for all children. More information on the DfE website.

Please note the information to the right about critical workers and vulnerable children.

With very best wishes from Mrs Hudson and the staff at Hartsbourne.

| EVENT | DATE |
|--|---------|
| Child Protection Training for all staff 3.30 | 3.2.21 |
| HALF TERM | 15.2.21 |
| School returns | 22.2.21 |
| Parents Evening (Late) | 23.3.21 |
| Parents Evening (Early) | 25.3.21 |
| END OF TERM | 26.3.21 |
| INSET for staff | 12.4.21 |
| School returns | 13.4.21 |

ATTENDANCE

If your child is currently attending school please make sure you arrive between 8.45am and 8.55am and they are collected at 3.20pm.

Please let us know if your child is going to be absent from school by 8.55am so we do not have to contact you for an explanation.

CRITICAL WORKERS

The government have mandated us to actively encourage all keyworker and vulnerable children to take up their entitlement and attend school and experience quality lessons, particularly those for whom remote learning is problematic. The qualifying categories of these groups are now wider ranging when compared to the initial March 2020 lockdown period and we currently have enough staff in school.

If you are a critical worker and have not yet sent your child to school, we would like to reassure you that we are a safe environment and we take all the precautions needed to maintain high standards of safety and cleanliness.

Remote Learning:

Thank you for all your positive feedback about the improvements to remote learning; it really helps to know what is working well and what needs to be tweaked. The use of a graphics tablet has been a game changer and the Friends of Hartsbourne have agreed to help out so we can have one for each class.

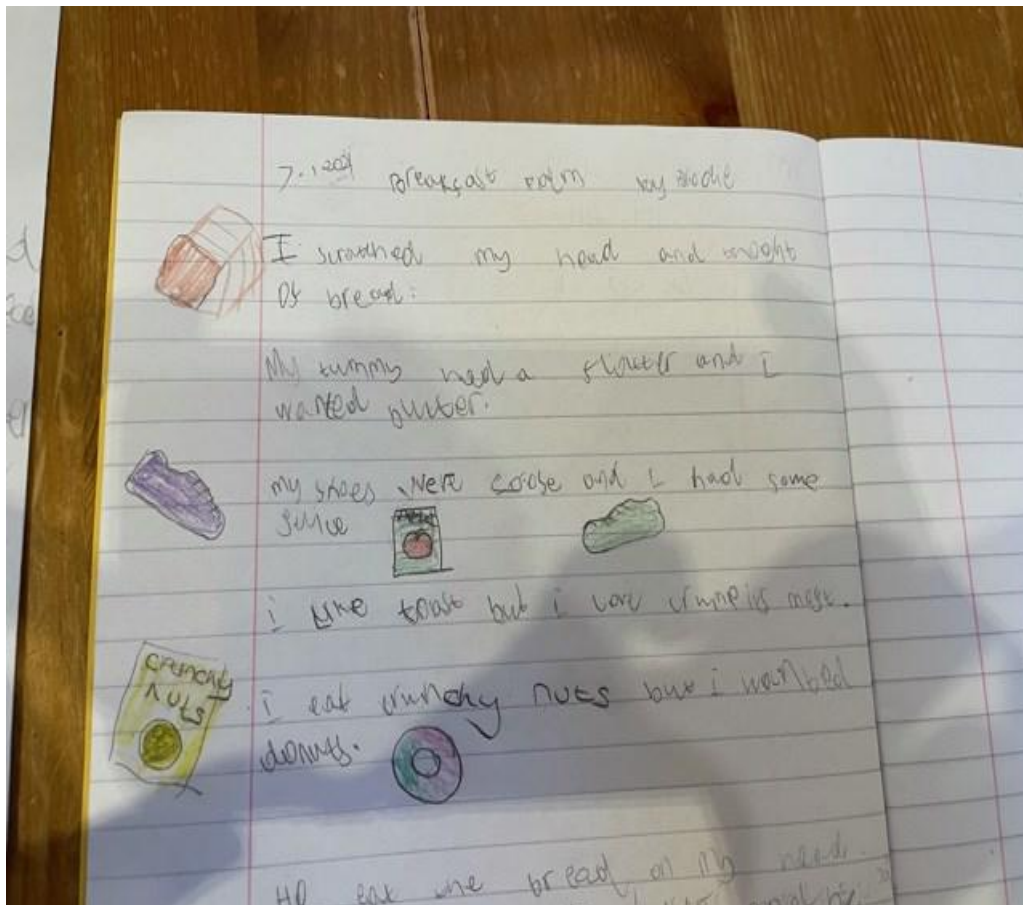
Next week I will send out a Google Form seeking feedback from you with regard to the remote learning, and we will use the responses to make further tweaks.

Hertfordshire are running a scheme where schools can apply for more data for parents who meet the following criteria:

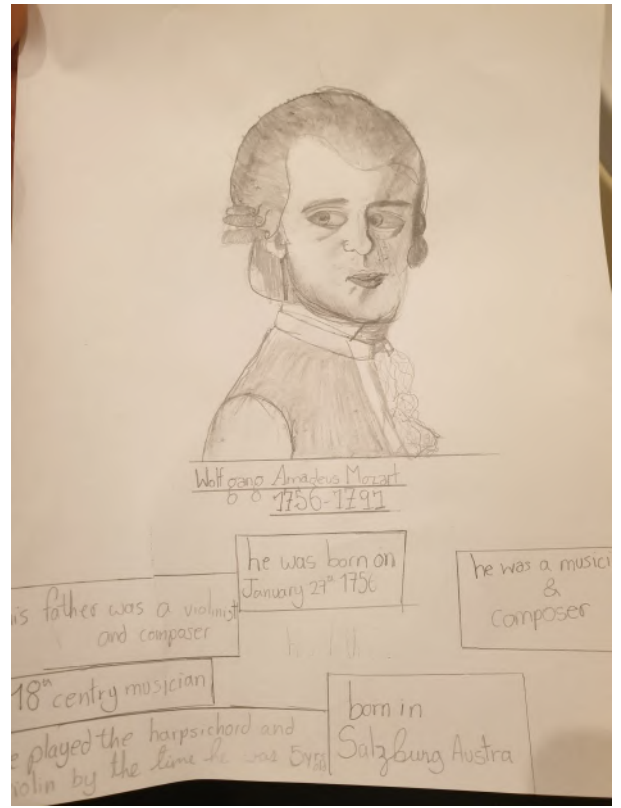
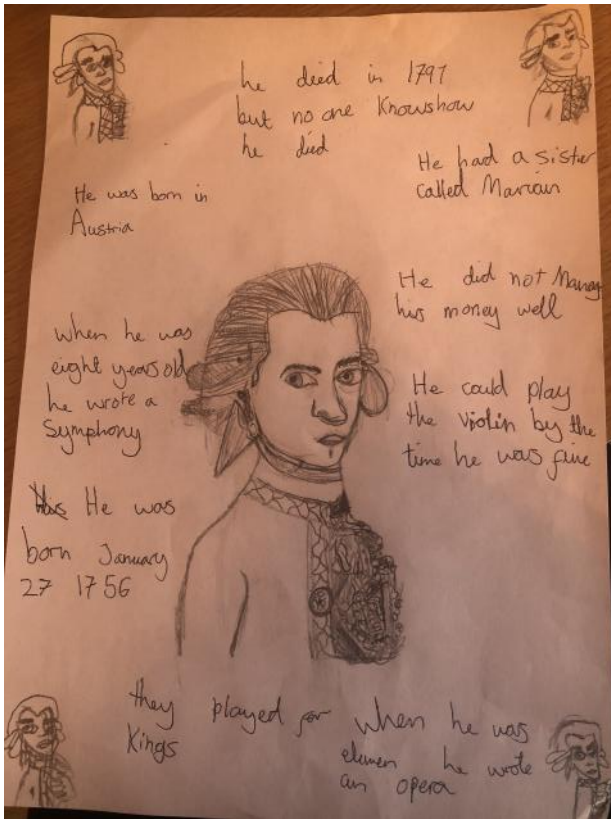
- Don't have access to a fixed broadband connection,
- cannot afford the additional data needed to access educational resources or social care service,
- only has access to a mobile device that uses a participating network,
- are facing disruption to their child's face-to-face education, or have been advised not to attend school (shielding)

Contact the office for further details.

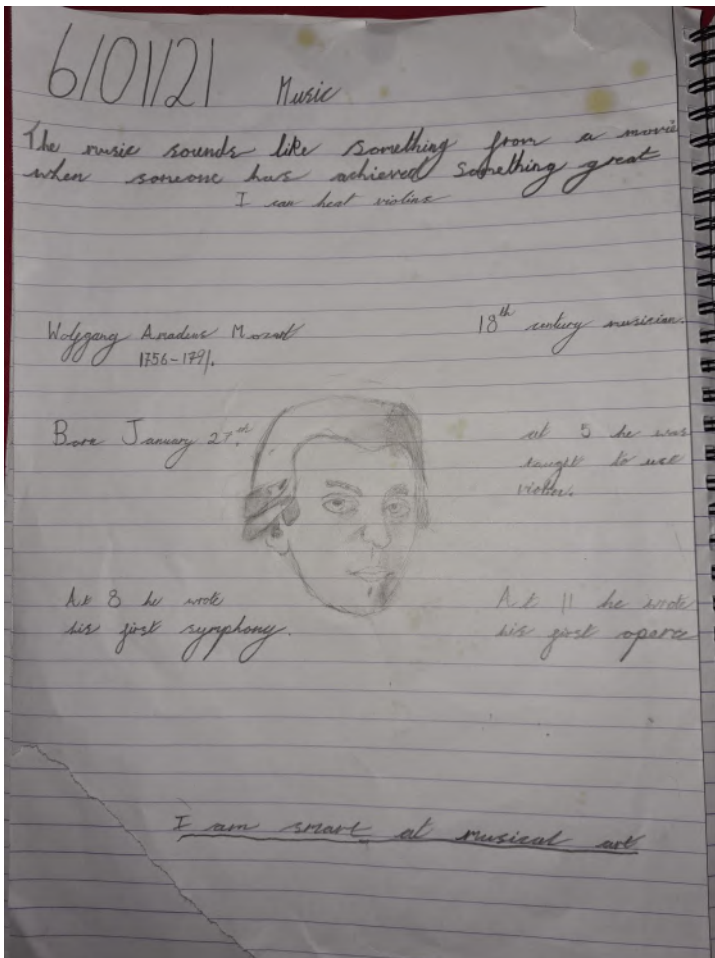
Please notify us via the parents e mail, if you or your child tests positive for Covid 19 and/or are having to isolate.



Brodie's amusing breakfast poem had me smiling this morning. Who wouldn't like a breakfast doughnut!

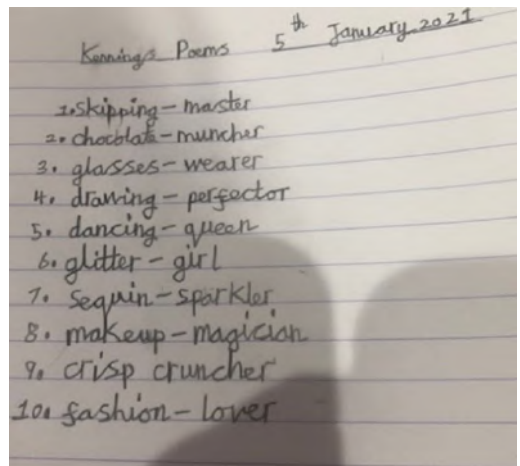
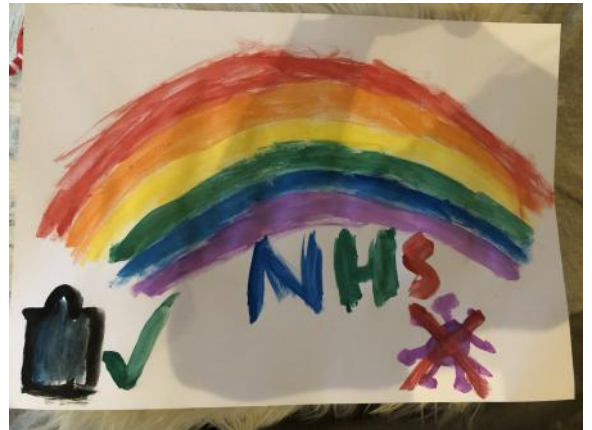


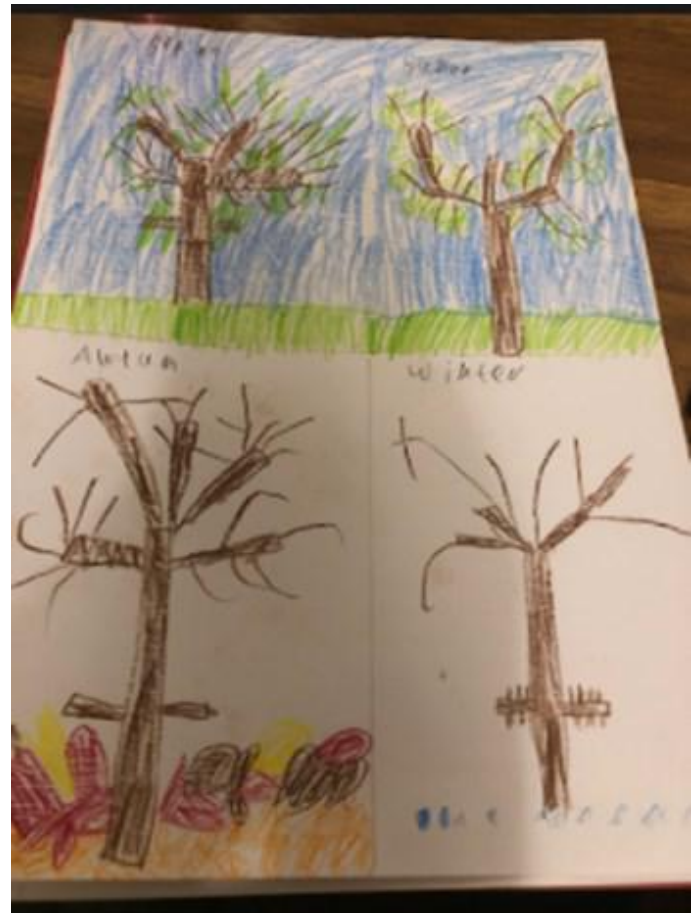
Pencil sketches of Mozart by Sophie and Yanni and Marshall (Year 5) Some very high quality pencil work from these Y5 pupils including the impressive use of line and shade.



Aimee's lovely Kennings poem (Y3).

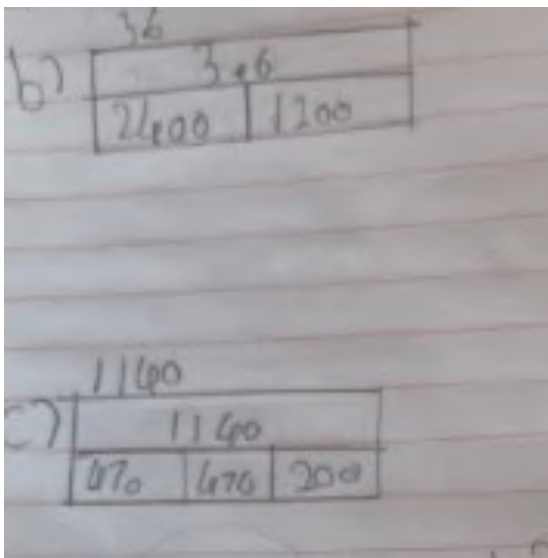
Noah C painted this lovely rainbow for the NHS





Spotting the signs of winter by Shiri (Left) and observing seasonal changes by Ori (right) and Mason (below).

Excellent work from Year 2 pupils.

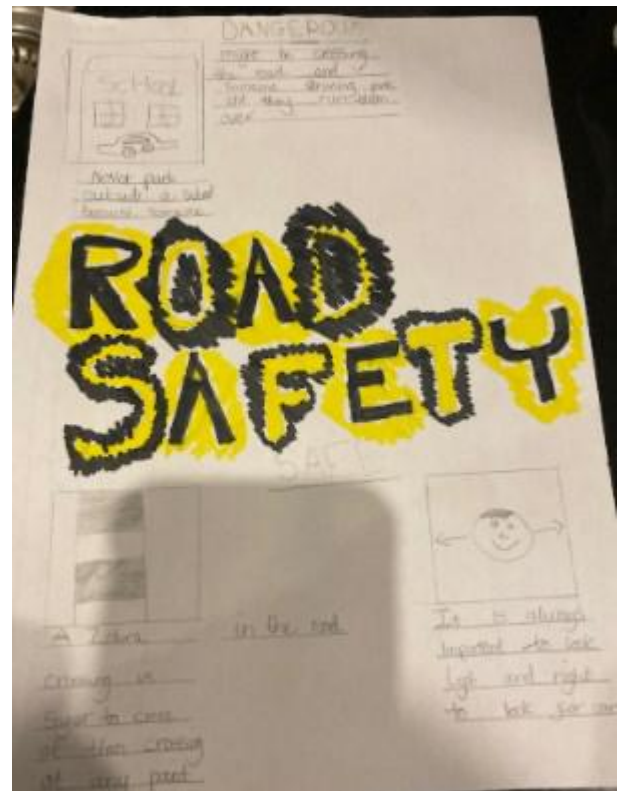


Noah used a ruler to set out his work perfectly!





The great science experiment from Zunaira and her brother



Isaac's great eye-catching and informative poster.



Year 5:

Sienna and Jessica made snow globes and Lorenzo designed some lovely wrapping paper.

Great work guys!



What to do in the holidays:

If your child tests positive for coronavirus (COVID-19) at any point during the Christmas break, please notify us as soon as possible so we can complete the relevant tracking and tracing process with public health, if required, and notify any other children or staff who have been close contacts and who need to self-isolate.

During the holidays you should contact parents@hartsbourne.org.uk. **This will be monitored until 24th December as after this point your child(ren) won't be designated as a close contact of anyone at the school.** Do not call the normal absence line as this won't be monitored.

Remember as soon as your child or any member of your household develops symptoms, they must start self-isolating immediately and book a test regardless of it being Christmas. The main symptoms of coronavirus are:

- A high temperature
- A new, continuous cough – this means coughing a lot, for more than an hour, or 3 or more coughing episodes in 24 hours
- Loss or change to sense of smell or taste – this means they cannot smell or taste anything, or things smell or taste different to normal

If you're not sure whether symptoms suggest COVID-19 or an everyday cough or cold, you can consult this online NHS symptom checker: <https://www.nhs.uk/conditions/coronavirus-covid-19/symptoms/>.

Please do not send children back to school if any of the following apply:

- They have symptoms of coronavirus (COVID-19).
- They, any members of your household, or any close contacts (**including extended family or friends they have seen** in the holidays and bubbles at holiday activities and sports clubs) have tested positive for COVID –19.
- They have not completed the full 14-day isolation period requested

Self-isolating is one of the most important things we can all do to help stop the spread of the virus and protect our loved ones and the vulnerable.

From January, and starting with secondary schools, including all special schools and alternative provision, the education workforce will be eligible for weekly on the spot tests. This will help identify asymptomatic cases – which make up a third of all cases – limiting the spread of the virus. This will be backed up by daily testing for staff who have been in close contact with a positive case therefore eliminating the need for self-isolation; allowing them to continue to come into school or college.

COVID 19 UPDATES

If you or your child tests positive for coronavirus at any point please notify us as soon as possible so we can complete the relevant tracking process with public health and notify any other children or staff who have been close contacts and need to self-isolate.

You could be fined if you are identified as a contact of someone with COVID-19 and you are notified by NHS Test and Trace that you need to self-isolate and do not to stay at home and self-isolate.

Remember as soon as your child or any member of your household develops symptoms, they must start self-isolating immediately and book a test.

SELF-ISOLATING MEANS STAY AT HOME.

If you or your family are affected by COVID-19 and need support locally with things like shopping, getting medication or financial advice, visit: www.hertfordshire.gov.uk/coronavirus

To protect self and others, we **STRONGLY RECOMMEND** you wear a face mask on school premises, especially if you are waiting for longer than a few minutes and there is less than 2m between you and others.

SYSTEMS FOR DROP OFF

Following the review we have made some adjustments to reduce the amount of waiting time for parents. Please leave the site promptly after collection to keep congestion to an absolute minimum. Maintain the 2m distance from anyone not in your household.

2 METRE DISTANCING AND MASKS

Please can I remind you that all adults should stay **two metres away** from each other whilst waiting for drop off and pick up. This includes outside the classroom doors; **PLEASE STAND ON A CROSS and keep to the grid pattern.**

For health & safety reasons, please keep your children with you and do not let them run ahead, or play chase around the banks and play equipment. This is to reduce the need for any potential first aid to the lowest point and model safe behaviour to children.

DURING THE LOCKDOWN PLEASE DO NOT BRING OLDER, SECOND-ARY AGE PUPILS ONTO THE SITE. SCHOOLS ARE REQUIRED TO KEEP VISITORS TO AN ABSOLUTE MINIMUM AND THIS INCLUDES SECONDARY PUPILS.