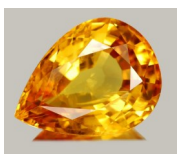


Hartsbourne Herald

Topaz



Hartsbourne Primary School
Hartsbourne Road
Bushey Heath WD23 1SJ

Edition 03 Autumn Term, 21st September 2018

LEARNING GEMS: TOPAZ (Brave enough to have-a-go and take a chance on being wrong, kind if others are wrong). Well done to the following children who have achieved the Topaz Certificate for this half term:

- Year 1: Chase and Aimee have been brave with tests and mistakes.
Year 2: Megan is helpful towards her peers and Talya always comforts someone who is upset.
Year 3: Lewis for having-a-go in 'Big Write' and Jessica has supported others.
Year 4: Damaris 'took a chance' when reading new words and Ryder tried something new.
Year 5: Jheel and Dhruv are the first to lend support to others during lessons.
Year 6: Aryan is never afraid to have-a-go at something new and Sophie VC is always a kind and supportive learning partner. (See Chloe's story on Page 3 also).

All our hall displays this term are related to the Learning Gems and they're looking great!

SCHOOL COUNCIL

Congratulations go to the following children who will be our School Council representatives:

- Year 2: Emma and Alec Year 3: Kushal and Yanni
Year 4: Jack and Jessica Year 5: Jaxon and Jheel
Year 6: Sofia and Erwan

APOLOGIES

Sadly I must apologise for forgetting to put the date of the Kittle photographs in the Newsletter. Many thanks to those parents who sent round the information via What's App! (I need the help; thank you!) Please note we have added a Friends of Hartsbourne Cake Sale on Friday 12th October.

ENRICHMENT, TRIPS AND VISITS

Red White and Blue Day is on **THURSDAY** 4th October rather than the Friday as three classes are going out for a trip on Friday 5th October. Children are encouraged to dress in Patriotic Colours and bring a £1.00 on the day. Red White and Blue Day is an annual fundraising campaign that raises money for ABF The Soliders' Charity, Royal Navy and Royal Marines Charity and the Royal Air Force Benevolent Fund.

We look forward to seeing parents (old and new) at The Friends Coffee afternoon next week Wednesday 25th September at 2.30pm (note new time adjustment).

E SAFETY

Thank you to those parents who came to the e-safety talk, it was hard-hitting but maybe that's the way it has to be these days! The children were very thoughtful and had some amazing questions for the presenter. We are sending out the parent and pupil Powerpoint slides separately to KS2 parents. Please share the pupil presentation with your child and talk to them about the issues raised.

Best wishes for a lovely weekend from Valerie Hudson (Head Teacher) and all the staff at Hartsbourne.

Diary Dates

Friends of Hartsbourne

* = Parents Invited	
Friends' New Parents Welcome* 2.30pm In The Duck	25.9.18
New Rec parent tour 2.00pm	1.10.18
Red White Blue Day THURSDAY	4.10.18
Rec/Y1 Theatre trip	5.10.18
Y5 Sky Studio Trip	5.10.18
New Rec parent tour 9.30am	9.10.18
New Rec parent tour 2.00pm	11.10.18
Photos for the Friends' Calendar	12.10.18
Harvest Assembly* 2.30pm	19.10.18
Parent Teacher meeting (early) Tues	23.10.18
Parent Teacher meeting (late)	25.10.18
Secondary school applications close	31.10.18
HALF TERM 29.10.18—2.11.18	
Diwali starts	6.11.18
Remembrance assembly* 2.30pm	9.11.18
Positive Behaviour Theme: Respect	12.11.18
Occasional Day, School Closed	7.12.18
KS1 show* (pm)	12.12.18
KS1 show* (am)	13.12.18
KS2 Show* (pm)	17.12.18
KS2 show* (6.00pm)	18.12.18
Christmas Dinner Day Wednesday	19.12.18

EVENT	WHERE	WHEN
Friends Cake Sale	Hall 3.30	Friday 12.10.18
Christmas Bazaar	Hall 3.30— 4.30pm	Wednesday 5.12.18
School Disco	Hall	Thursday 24.1.19
Bright Colours Day Bring a £1.00	All Classes	Friday 25.1.19
Valentine's Day Cake Sale	Hall	Friday 8.2.19
Easter Bonnet Day	All Classes	Friday 5.4.19
Movie Night (Y2—Y6)	Classrooms	Wednesday 22.5.19
Bring a Bottle	Classrooms	Friday 14.6.19
School Fair	Playground	Saturday 15.6.19
Parents' Football Match (!)	Field	Sunday 14.7.19
Crazy Hair Day	School	Monday 22.7.19

Sika 355

Roe 347

Muntjac 276

Fallow 323

Please make sure your child is collected promptly at 3.20pm from their classroom door. We do not have any after-school childcare facilities so unless your child is attending a club they must be collected by the time stated.

If you have a genuine emergency (eg flat tyre) please telephone the school office to let them know. Heavy traffic is NOT an emergency as we must all plan our journeys for increased traffic mid-afternoon. If you cannot get to school for 3.20pm because of work commitments then please ar-

HOMEWORK—ON TEACHER'S BLOG:
Please read your teacher's class blog for homework as we are no longer able to use 'Show My Homework' due to cost.

Please notify all sickness absence via phone or e mail before 8.55am on each and every day of absence. There are NO exceptions!

www.hartsbourne.org.uk. E-mail: parents@hartsbourne.org.uk. Telephone: 0208 950 6853
PAPER COPIES OF NEWSLETTERS ARE AVAILABLE BY REQUEST TO THE OFFICE.

HARTSBOURNE PRIMARY SCHOOL

LEARNING TO LEARN GEMS



Pearl

Can maintain good focus, stay on-task, ignore distractions, good listening skills for peers and adults.

Topaz

Brave enough to have-a-go, willing to take a chance on being wrong, kind and supportive if others are wrong.

Amethyst

Comfortable with mistakes; can learn from them and bounce back. Can keep calm even when upset.

Ruby

Can support others with friendliness, smiling and good listening, give praise appropriately and help others with a problem.

Sapphire

Can collaborate with others in group work, take turns, share ideas.

Listen to the ideas of others and accepts challenges/changes.

Emerald

Co-operate with different partners on a 1:1 basis and show good listening and talking skills. Take turns and co-operate to develop learning and ideas.

Diamond

Being independent and responsible by solving own problems, using different learning strategies and building on previous knowledge. Can identify next steps in learning.

Well done to Chloe in Year 6 for this confident and amusing story opener that really grabs the reader's interest! I want to know more....

I was so excited as soon as I got into the hotel room to change into my swimming costume and jump straight into the swimming pool. At least that was how I had planned the beginning of my holiday. That's right, just to dive in and cool myself down as I was so hot and bothered. That's how all holidays are meant to be, right?

Well that's certainly not how my holiday started! Believe it or not I had to go to the nearby supermarket. I know I just said that it was nearby, but trust me, it feels like miles away when you are walking in the boiling hot heat. I must admit I can remember being really miserable in the supermarket because all I could think about was swimming in the pool....