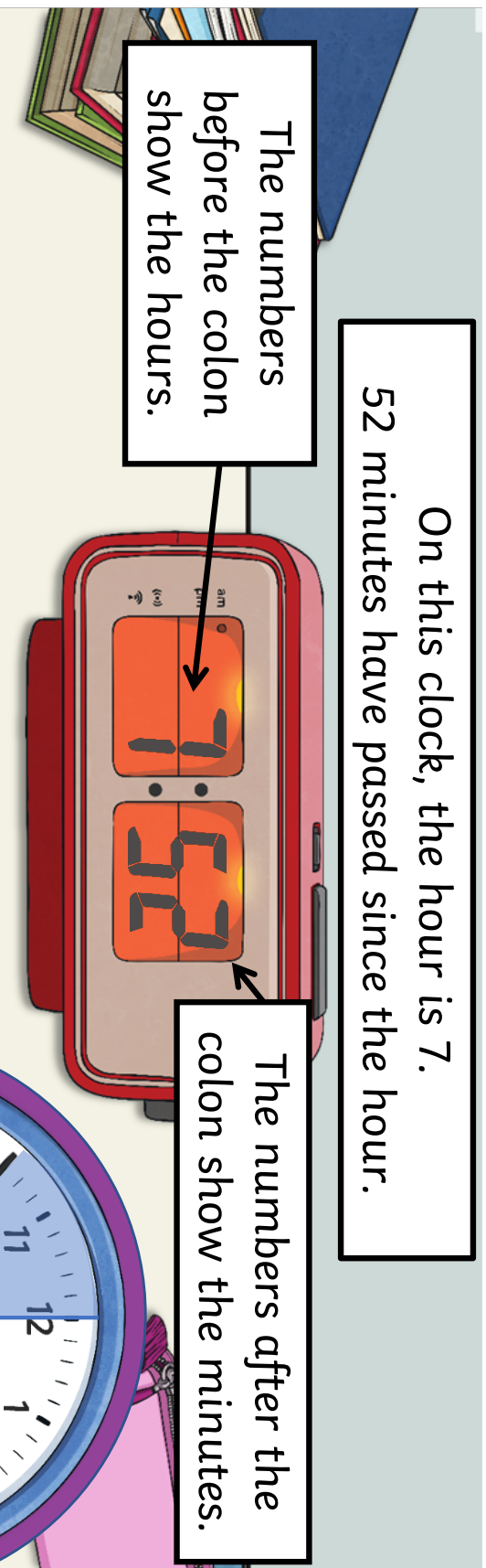


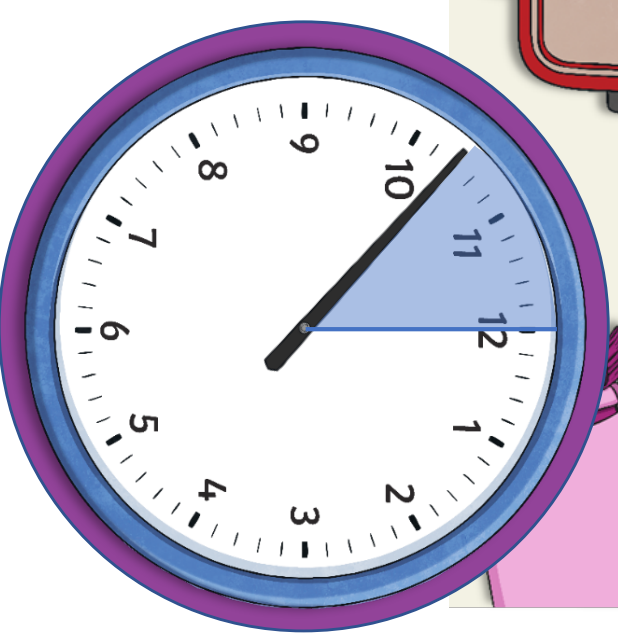
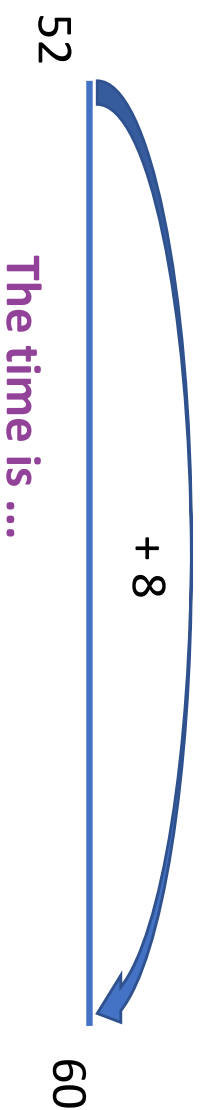
On this clock, the hour is 7.
52 minutes have passed since the hour.

The numbers
before the colon
show the hours.

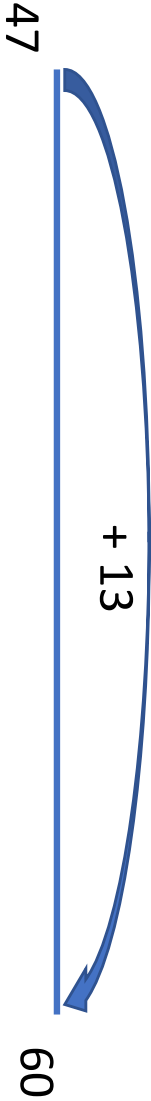
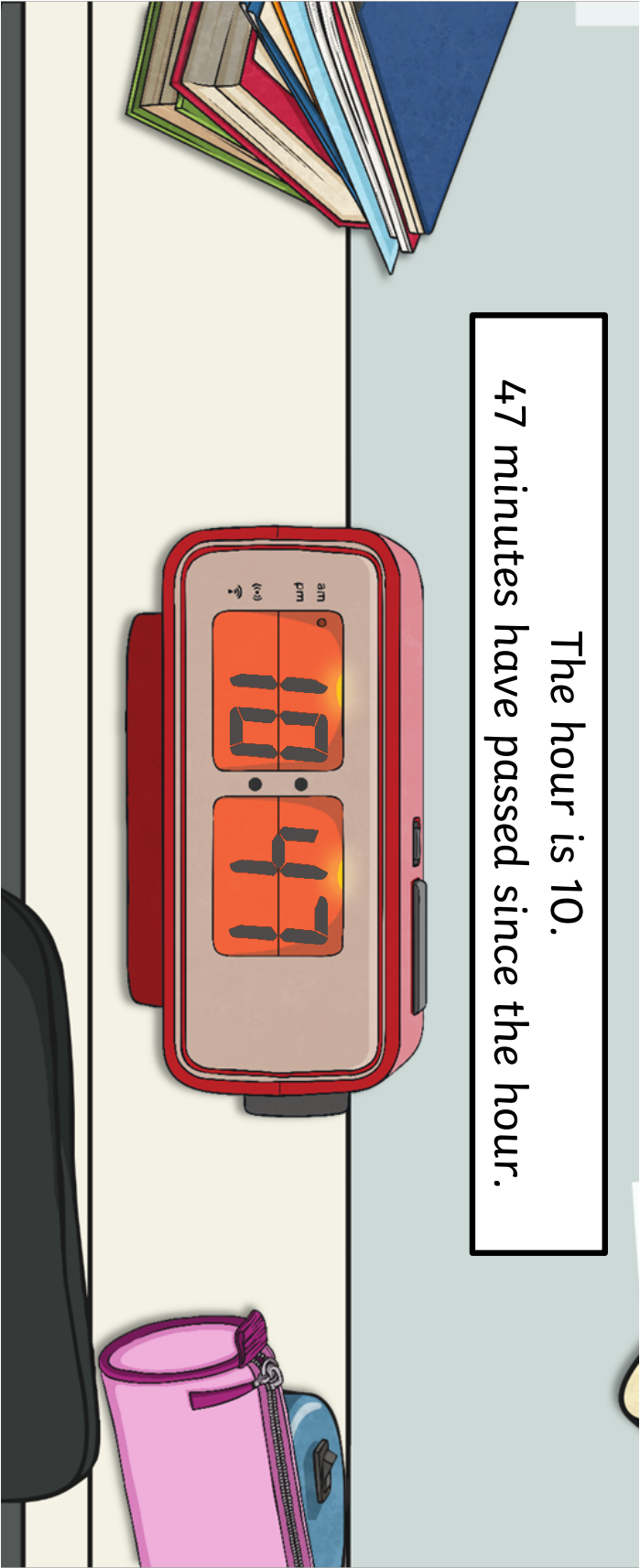
The numbers after the
colon show the minutes.



Once the time is more than 30 minutes past the hour, we say how many minutes are left to the **next** hour. Remember, there are 60 minutes in an hour.



The hour is 10.
47 minutes have passed since the hour.

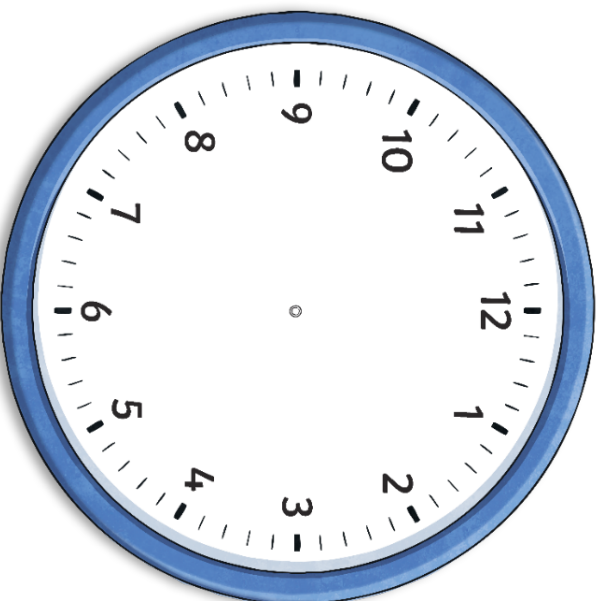


The time is ...



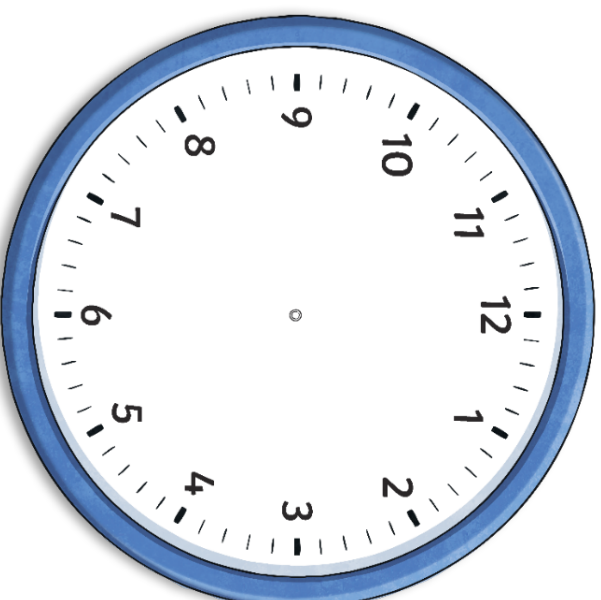
Set these digital times on an analogue clock.

9:37



23 minutes to 10

3:58

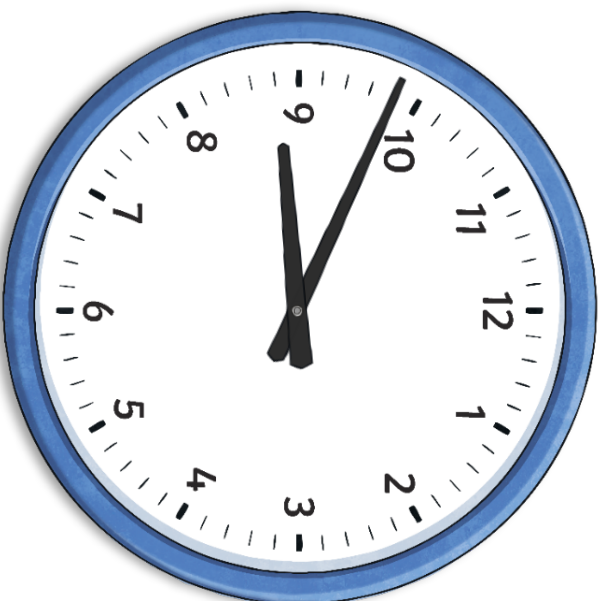


2 minutes to 4



Set these digital times on an analogue clock.

8:49

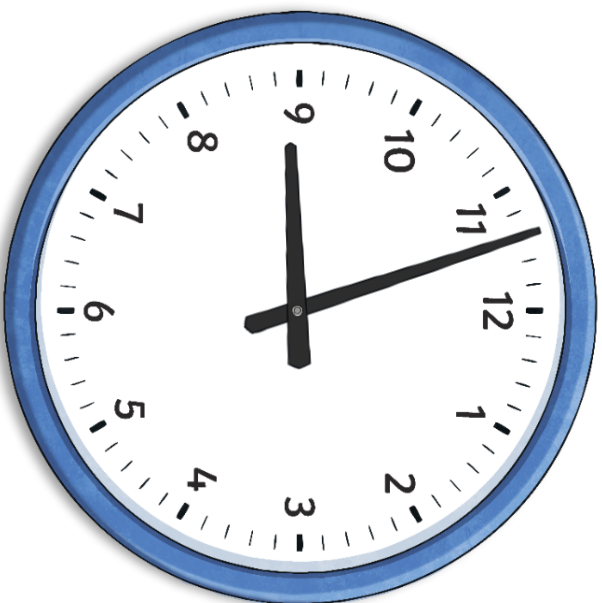


1:32





What time is shown on each clock?
What would this be as a digital time?



3 minutes to 9



18 minutes to 3



What time is shown on each clock?

What would this be as a digital time?

